

COMMUNITY MEETING

WHARTON DUAL LANGUAGE ACADEMY

Date: 04/21/2016

Presenter: Muñoz|AutoArch



Wharton Dual Language Academy's Mission Statement

Wharton Dual Language Academy's mission is to empower our students to become respectful, life long, bilingual and bi-literate inquirers who celebrate diversity as responsible citizens of the world.

La misión de Wharton Dual Language Academy es capacitar a nuestros estudiantes a ser indagadores respetuosos, vida larga, bilingüe y bi-alfabetizados que celebran la diversidad como ciudadanos responsables del mundo.



Wharton Dual Language Academy's Guiding Principles

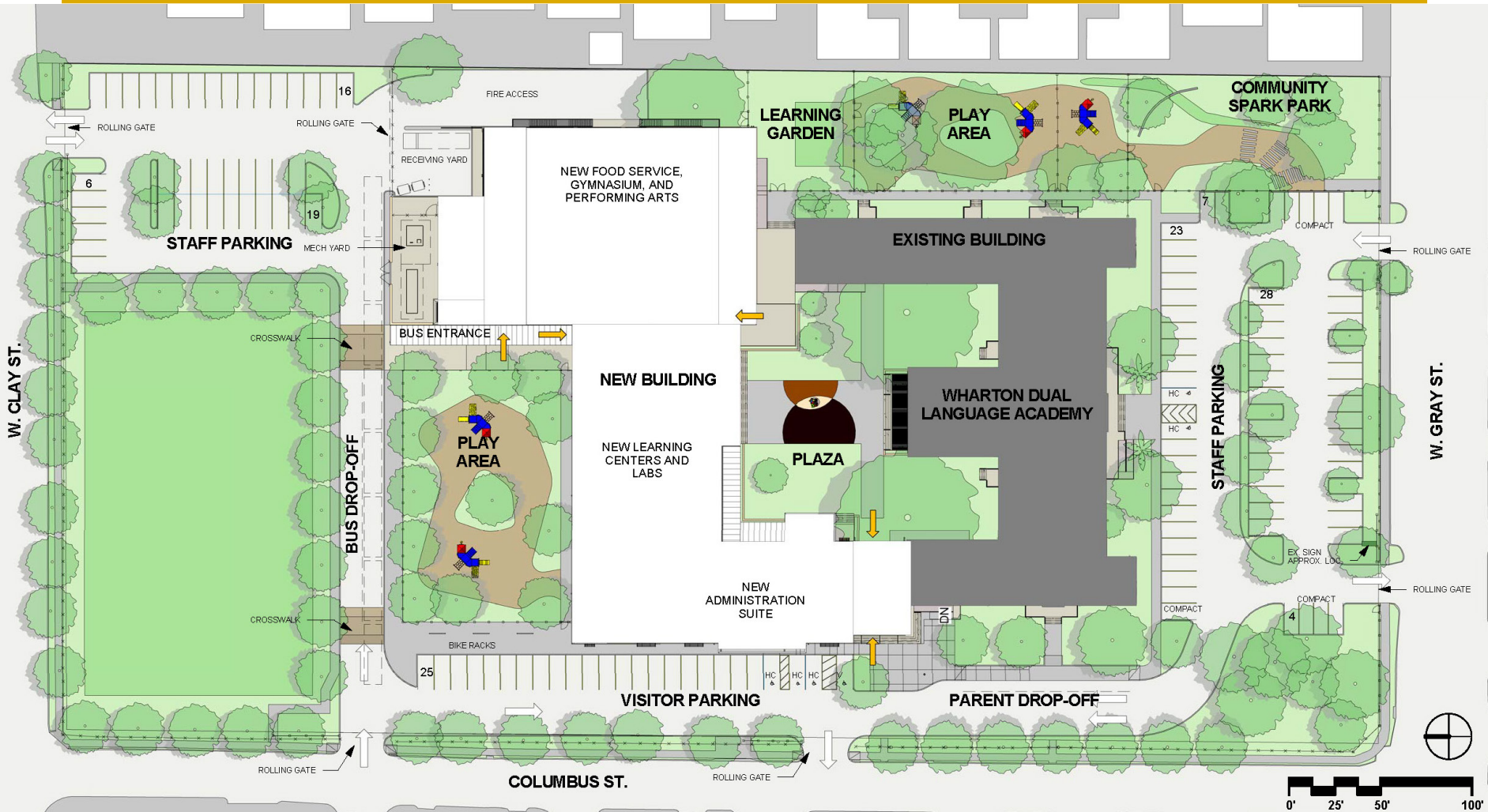
- Bilingualism, bi-literacy, and biculturalism are at the core of our school. Our mission is to have all of our **students master both Spanish and English** by the time they exit our school.
- Our students experience strong academics through **inquiry based teaching and learning** that are linked with real world experiences and lead to student initiated action.
- We believe that **21st century, global classrooms** should allow for critical thinking, collaboration, communication and creativity.
- Our school must be **a safe place for our students and staff**, both physically and emotionally.
- Our learning environment needs a **media center that includes a traditional library area and the flexibility to accommodate emerging technologies** to prepare students for the 21st century workforce.
- Students and teachers need **flexible learning areas** including spaces for working individually, collaboratively with spaces for presentations and **outdoor learning spaces**.
- Early childhood areas should reflect the **needs of young children**.

Wharton Dual Language Academy's Design Charrette

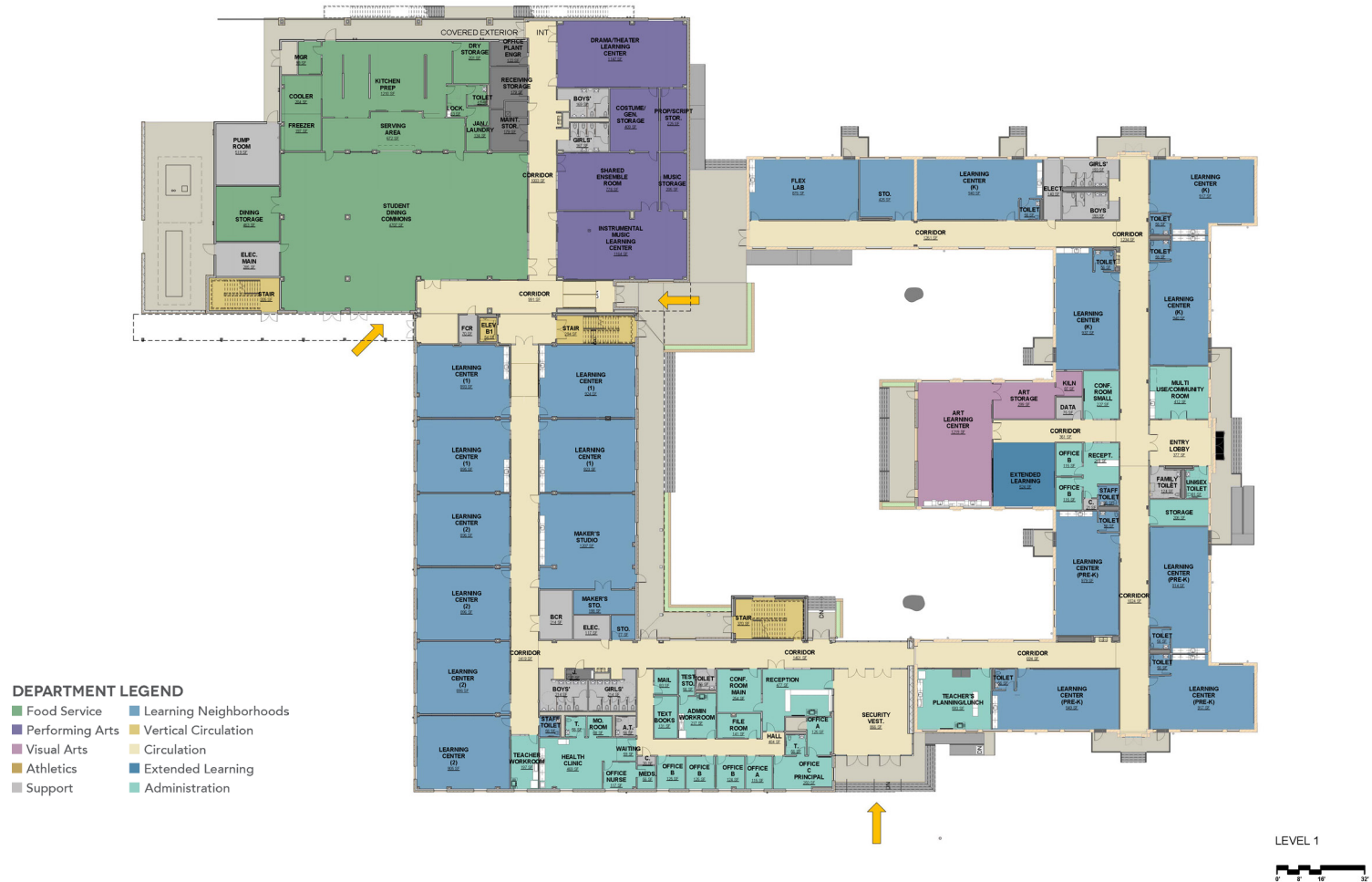


DESIGN DEVELOPMENT RESULTS

Site Plan



First Floor



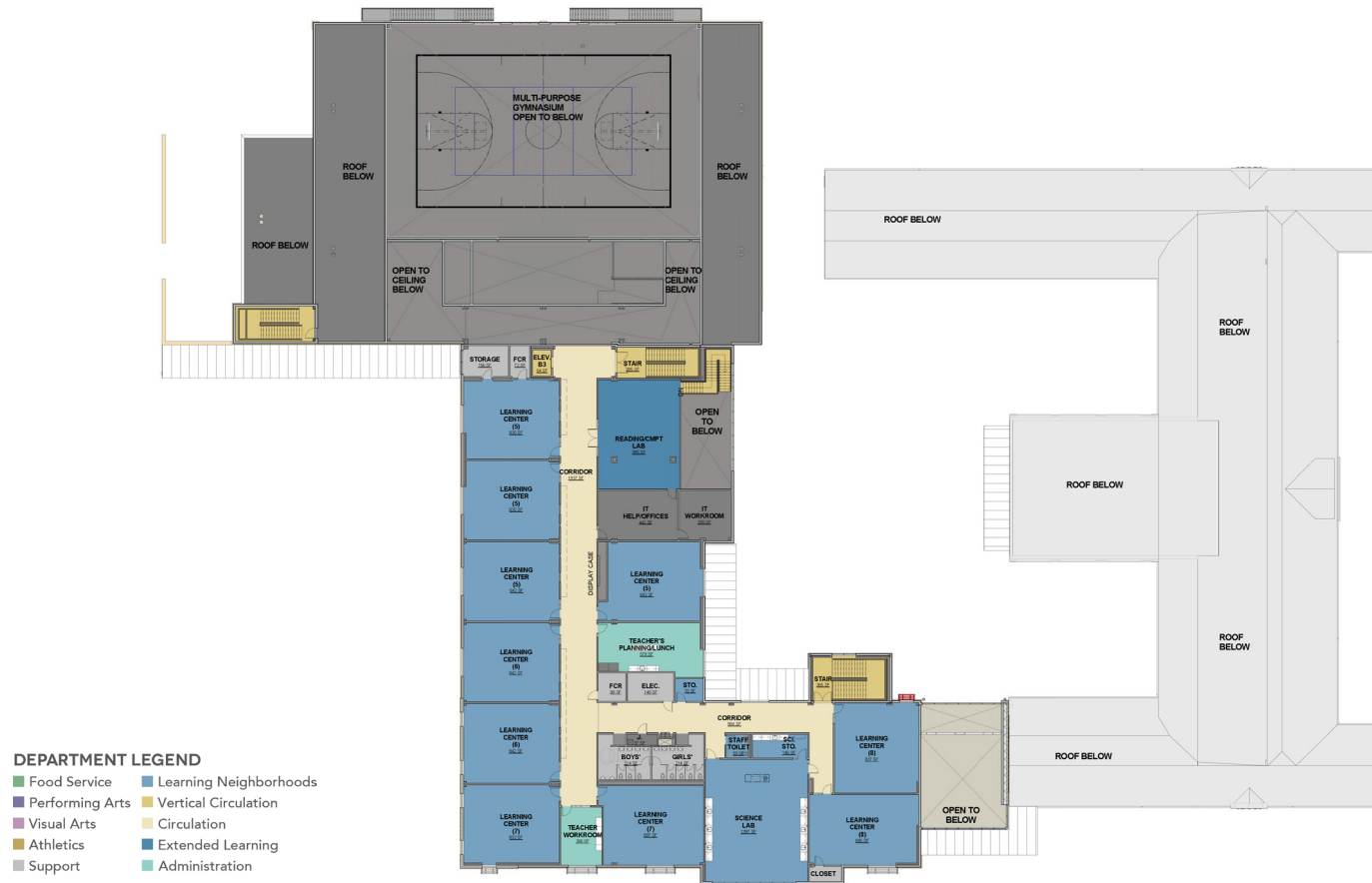
Second Floor



LEVEL 2



Third Floor



LEVEL 3



DESIGN DEVELOPMENT RESULTS EXTERIOR VIEWS

Exterior Views



Exterior Views



Exterior Views



Exterior Views



Exterior Views



Exterior Views



EXTERIOR VIEW - BUS DROP OFF

Exterior Views



Exterior Views



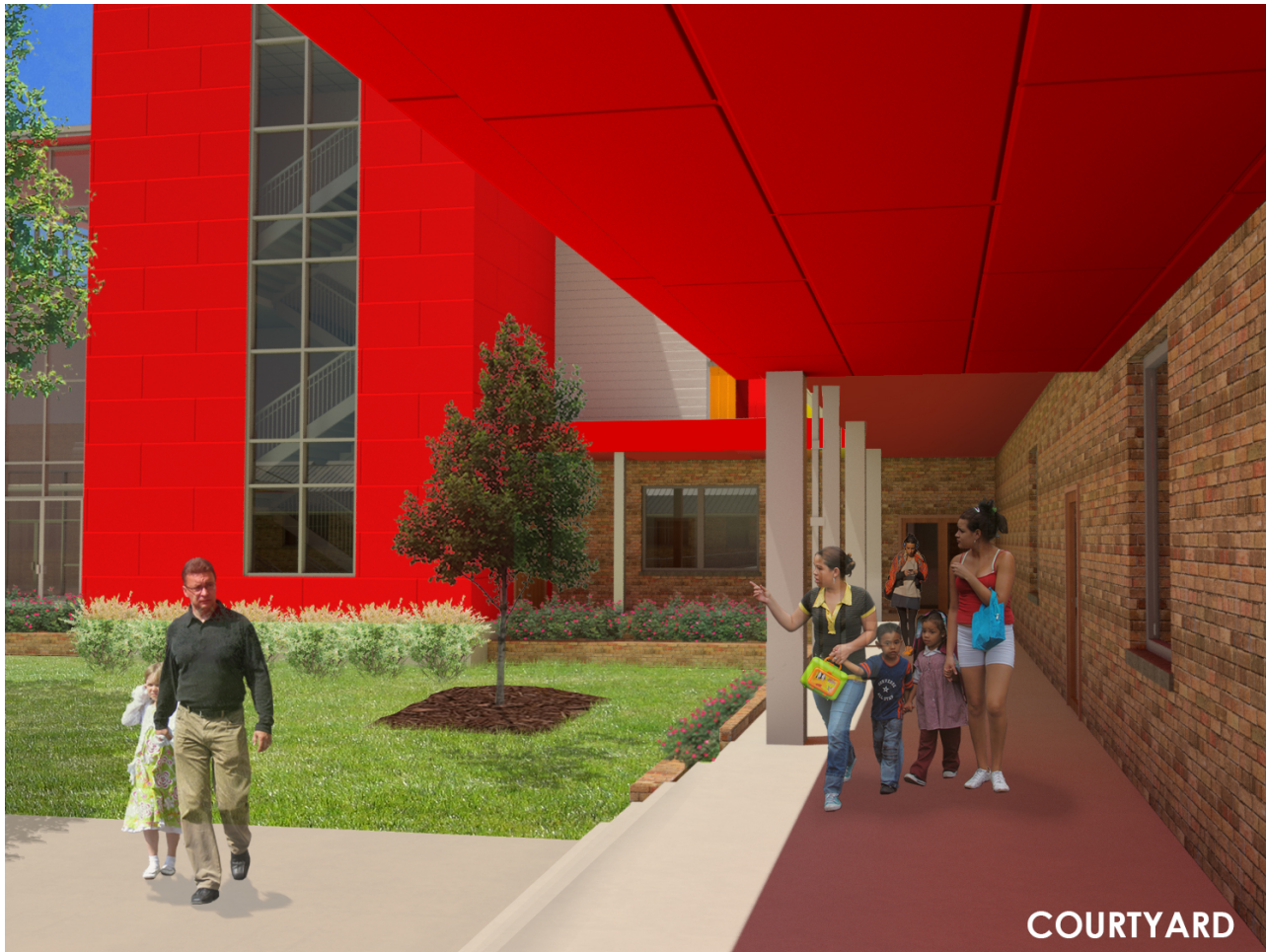
Exterior Views



Exterior Views



Exterior Views



DESIGN DEVELOPMENT RESULTS INTERIOR VIEWS

Interior Views



MAIN LEARNING COMMONS

Interior Views

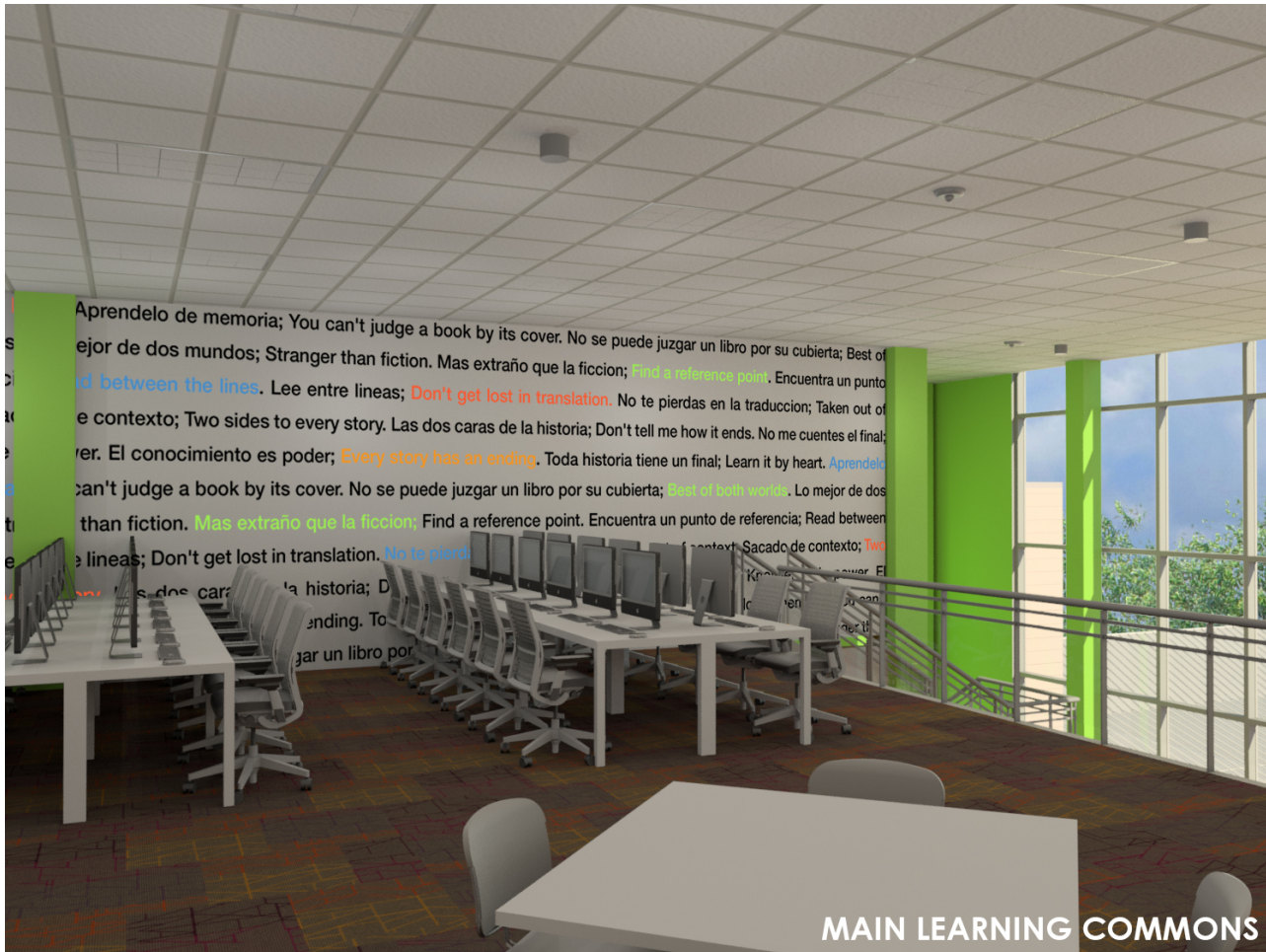


Interior Views



MAIN LEARNING COMMONS

Interior Views





Interior Views



STUDENT DINING COMMONS

Interior Views



GYMNASIUM PRE-FUNCTION

Interior Views



Thank you

Date: 04/21/2016

Presenter: Muñoz|AutoArch

